

THE RESILIENCE SHIFT

Activities & Outputs (2017 – 2019)

Overview

For 4TU/DESIRE meeting June 29/30 2020

resilienceshift.org
info@resilienceshift.org

ARUP



Overview

This brief note sets the context for the publications and other outputs (videos and blogs) that are available on www.resilienceshift.org.

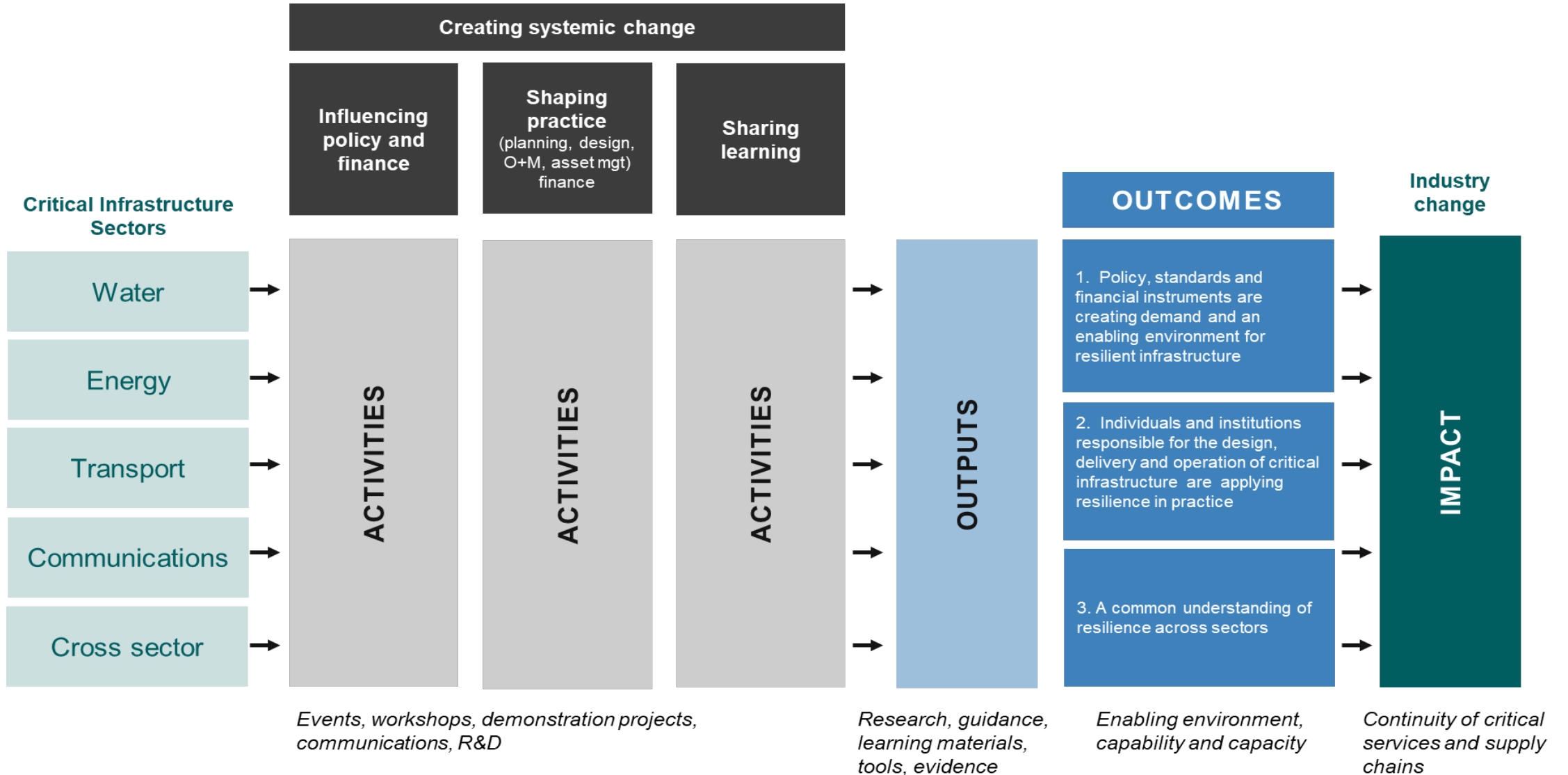
Our outputs came from focused activities, working closely with a range of grantees and partners. They were designed to sit within the matrix on the following page, often spanning more than one sector, or spanning more than one of our ‘verticals’ of policy, practice and learning. For example, our work on urban water resilience (see <https://www.resilienceshift.org/campaign/city-water-resilience-approach/>) encompasses policy makers and practitioners within the system.

Activities were shaped to respond to identified gaps in knowledge and information, and draw heavily on key informant interviews, and accessing networks of expertise to develop a collaborative view of challenges and good practice.

On our website the tabs for Policy, Practice and Learning provide details of all the activities we have initiated, including those that don't have formal publications, such as the video story for the [ISCA rating tool](#), the [ICRG success story](#), and the work in progress around [Resilient Leadership](#). We recommend exploring the context of our activities here, before looking at the Resources page, which collates all of our outputs in one place, as well as relevant work by others.

Some of the more transient content in our news pages and blogs includes important perspectives that complement the formal outputs, and it would be worth searching those.

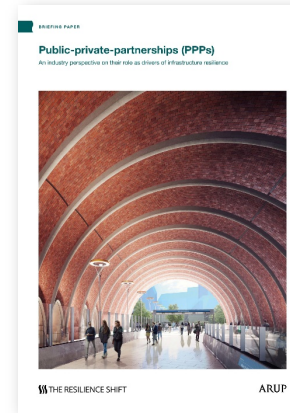
Creating systemic change



Influencing policy

Understanding how different mixes of legislation and policy instruments can incentivise and enhance the resilience of critical infrastructure, and shape resilience-led policy-making.

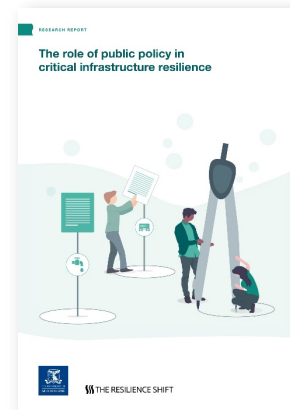
Example outputs



PUBLIC PRIVATE PARTNERSHIPS (PPPs)



LEGISLATION

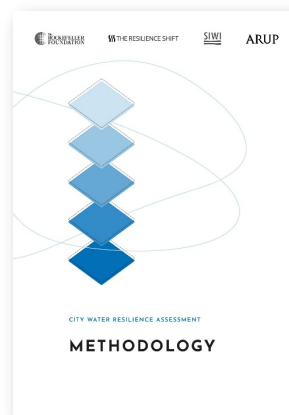


PUBLIC POLICY

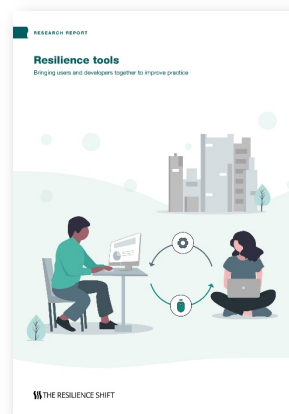
Shaping practice

Building a global community equipped with the knowledge and tools needed to drive practice towards better, more resilient critical infrastructure and a safer world.

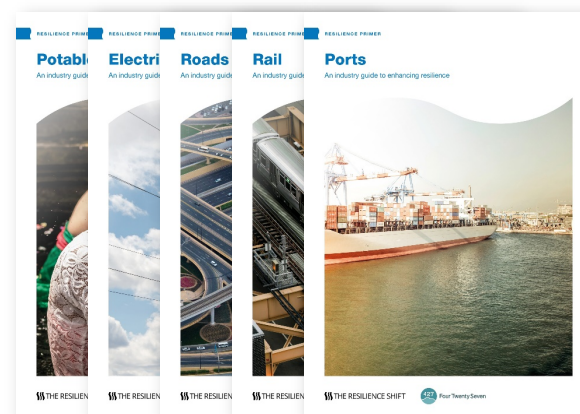
Example outputs



CITY WATER RESILIENCE APPROACH



RESILIENCE TOOLS

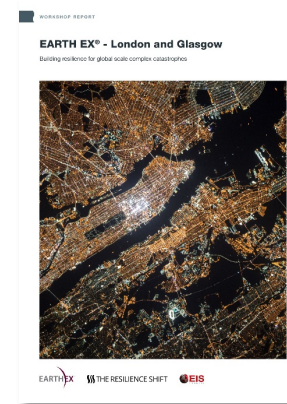


RESILIENCE PRIMERS

Sharing learning

Advancing best practice across the infrastructure value chain requires collaborative working and fostering knowledge transfer.

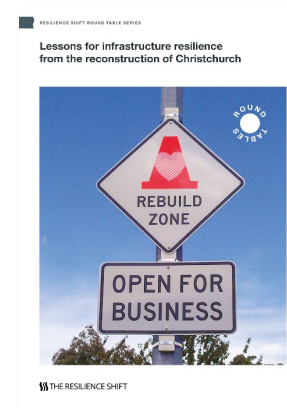
Example outputs



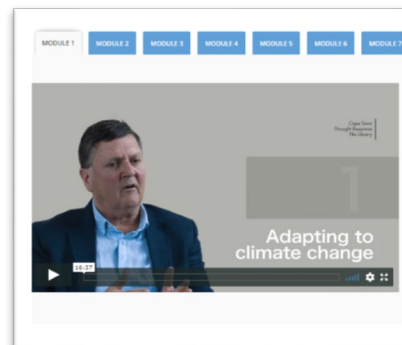
BLACK SKY SCENARIOS



CASE STUDIES



ROUNDTABLE REPORTS



LEARNING FROM CAPE TOWN DAY ZERO CRISIS



Thinking about whole systems



Overcoming fragmented governance



Managing deep uncertainty



Engaging the whole value chain



Demonstrating the benefits of resilience

10 insights for resilience

These insights, drawn from our work, capture what matters most in creating a shift towards more resilient infrastructure.



Focussing on outcome-led approaches



Adopting technology to enhance resilience



Transferring knowledge widely



Becoming safer, resilient and more sustainable



Developing guidance and standards

Discussion points

Are there any quick wins you might propose that are related to RS work? (e.g. journal or conference papers, collaboration with others working on similar initiatives).

Are there any more substantive next steps you might propose to build on RS work? (including what, and who with? Reflecting on the 10 insights for resilience)

We'd be interested to hear your views on different formats, blogs, videos, formal publications.

Any additional questions that you would like to ask the RS team?